

## A comparative analysis of overall codon usage pattern of Louping Ill virus with natural livestock host and associated vector

Anjusha Mune<sup>1\*</sup>, Ajay Pandey<sup>2</sup> and Khushhali Menaria Pandey<sup>1\*</sup>

<sup>1</sup>Department of Biological Science and Engineering, MANIT Bhopal (M.P.) India

<sup>2</sup>Department of Applied Mechanics, MANIT Bhopal (M.P.) India

### ABSTRACT

Louping ill is a zoonotic viral disease caused by louping ill virus (LIV) which is a member of genus *Flavivirus* in the family *Flaviviridae*. This febrile illness to livestock can further develop into fatal encephalitis. The virus LIV is closely related to tick-borne encephalitis virus and occurs wherever the primary vector tick (*Ixodes ricinus*) is found. To understand the viral evolution, comparison and analysis of the codon usage of LIV, its vector, and the host is important. The present study reports the pattern of codon usage in LIV, its vector, and the host by calculating the Effective number of Codons (ENC), Codon Adaptation Index (CAI), and Relative Synonymous Codon Usage (RSCU) and other indicators. The results indicate relatively low codon usage bias of LIV. The ENC - plot demonstrates the substantial role played by mutation pressure. The comparative analysis of CAI among virus, vector and its host, indicates that the virus is more adaptive to the host than the vector. A comparative analysis of RSCU between virus, vector, and its host shows that the codon usage pattern of LIV is a mix of coincidence and antagonism. To the best of our knowledge, this is the first report describing codon usage analysis of LIV and findings are expected to increase our understanding of factors involved in viral evolution and fitness toward vector and host.

**KEY WORDS:** CODON USAGE, EVOLUTION, LOUPING ILL VIRUS (LIV), EFFECTIVE NUMBER OF CODONS, RELATIVE SYNONYMOUS CODON USAGE

**Article Information:** \*Corresponding Author: anjumune@gmail.com

Received 27/03/2018 Accepted after revision 19/06/2018

Published: 30th June 2018 Pp- 300-306

This is an open access article under Creative Commons License,

Published by Society for Science & Nature, Bhopal India.

Available at: <https://bbrc.in/>

Article DOI: <http://dx.doi.org/10.21786/bbrc/11.2/16>

## INTRODUCTION

Louping ill virus (LIV) is a tick-borne member of the genus *Flavivirus* in *Flaviviridae* family. It is a positive single stranded, 40-50 nm RNA virus whose genome comprises a single open reading frame (ORF) that is approximately 11 kb in length (Grard *et al.*, 2007; Jeffries *et al.*, 2014). The ORF encodes a polyprotein that consists of three structural and seven non-structural proteins. The virus show high degree of genetic homology to tick-borne encephalitis virus (TBEV) of the same family (McGuire *et al.*, 1998; Jiang *et al.*, 1993). It is mainly transmitted by ticks and the primary vector is *Ixodes ricinus* (Dobler *et al.*, 2010). LIV mainly causes febrile illness in sheep, cattle, horse, pigs and some other animals that may eventually result in fatal encephalitis.

Sheep are the most important reservoir host for LIV. The disease is dominantly detected in animals from upland areas of British Isles (Gao *et al.*, 1997) though the disease is also reported in Scotland, Ireland, and northern England where the tick vector *Ixodes ricinus* is found. Infection with LIV was first reported in sheep of Basque region of northern Spain in 1987 (Gonzalez *et al.*, 1987). Most of the cases of LI infection occur in spring / early summer when ticks are common. In endemic areas morbidity and mortality depends upon animal's immune status, concurrent infection and other factors. All age group of animal get infected by it and once encephalitis is developed the case fatality rate goes up to 50%. The mortality rate is even higher in animals that are less than two years old. Currently, there is no specific treatment for LIV with only supportive therapies being helpful to some extent (Hyde *et al.*, 2007 Mansfield *et al.*, 2015 Butt *et al.*, 2016).

The molecular sequence data started to be accumulated nearly 20 years ago. It was observed that the genetic code is redundant and most amino acids can be translated by more than one codon (Wang *et al.*, 2011). This redundancy is a key factor regulating the efficiency and accuracy of protein production. Alternative codons within the same group that encode the same amino acid are often called 'synonymous' codons. These codons are not randomly selected within and between genomes. This is referred to as 'codon usage bias' (CUB). CUB are widespread across the tree of life and are influenced by mutation pressure, natural or translational selection, secondary protein structure, replication, selective transcription, hydrophobicity and hydrophilicity of the protein, and the external environment (Xiang *et al.*, 2015 Butt *et al.*, 2016 Mune *et al.*, 2017).

As viruses are intracellular pathogens they have to co-evolve with host molecular mechanisms. The interplay between the codon usage of the virus and its host is expected to affect the overall viral survival, fitness, evasion

of the host immune system and evolution. The knowledge of the codon usage of viruses can provide information about their molecular evolution and extend our understanding of the regulation of viral gene expression. This may also offer significant improvement in vaccine design for which the efficient expression of viral proteins may be required to generate immunity (Tao *et al.*, 2009 Velazquez *et al.*, 2016). To gain insight into the characteristics of the viral genome and evolution, the codon usage patterns of the three components of transmission cycle, namely - the virus (LIV), vector (*Ixodes ricinus*), and hosts (Sheep (*Ovis aries*), Pig (*Sus scrofa*) and cattle (*Bos taurus*)) were investigated in our study.

## MATERIALS AND METHODS

### SEQUENCE DATA

The complete genome sequences were downloaded from the National Centre for Biotechnology (NCBI) database (<http://www.ncbi.nlm.nih.gov>) in FASTA format. The detailed information (accession numbers, country, sequence length etc.) of the selected genomes were listed [Table. S1]. Open reading frames (ORF) of all the genomic sequences were identified by using NCBI ORF finder (<https://www.ncbi.nlm.nih.gov/orffinder/>). The host (*Ovis aries*, *Sus scrofa* and *Bos taurus*) and vector (*Ixodes ricinus*) codon usage were obtained from the Codon Usage Data Base (CUD).

### CODON USAGE ANALYSIS

The overall frequency of occurrence of the nucleotides (A %, C %, U %, and G %) was calculated along with the frequency of each nucleotide at the third site of the synonymous codons (A<sub>3</sub>, C<sub>3</sub>, U<sub>3</sub> and G<sub>3</sub>). Also the overall GC, AU and GC<sub>3</sub> content were calculated using MEGA7 software to investigate the compositional properties of coding region of LIV. To investigate the codon usage pattern, the RSCU (Relative synonymous codon usage) values for synonymous codons were calculated according to the published equation (Sharp *et al.*, 1986). The stop codons (UAA, UAG and UGA) and AUG for Met, UCG for Try were not introduced into the RSCU analysis. Further, ENC (Effective number of codon) values were calculated to measure the magnitude of codon usage bias in the coding sequences of viral genome. The ENC value ranges from 20 (when only one synonymous codon is chosen by the corresponding amino acid) to 61 (when all synonymous codons are used equally). A low ENC value indicates a strong codon usage bias (Wright *et al.*, 1990; Zhang *et al.*, 2011 Butt *et al.*, 2013).

The CAI (Codon adaptation index) was used to estimate the adaptation of LIV to its host and vector codons.

CAI values range from 0 to 1. A higher CAI score for a given gene indicates more similarity between its codon usage and the predefined reference set, using the CAIcal approach (available at: <http://genomes.urv.es/CAIcal>) (Puigbo *et al.*, 2008).

## RESULTS AND DISCUSSION

### SYNONYMOUS CODON USAGE IN LIV

The preference for one type of codon over another can be greatly influenced by the nucleotide composition of genome. We first analysed nucleotide composition and observed that the nucleotides A and G were higher and followed by C and U (Table 1) The LIV genome is rich with G content having a mean value of 32.17. For a better understanding we analysed nucleotide composition at third position of codon and observed the dominance of G<sub>3</sub> nucleotide with a mean value of 34.20. Even the percentage of dinucleotide with G is higher compared to dinucleotide with other nucleotides (respective mean values for GC, AU, GC<sub>3</sub> and AU<sub>3</sub> being 54.74, 45.26, 60.74, and 39.26).

To investigate the extent of codon usage bias, the ENC values among LIV genome were calculated. An average value of 53.97 represents stable ENC value (ENC > 40) (Mune *et al.*, 2017) which suggests that the genomic composition of LIV is conserved. The result shows that the codon usage of LIV is slightly biased and mainly affected by the nucleotide composition. To further understand the codon usage pattern, the analysis of ENC - plot (ENC value V/s GC<sub>3</sub> content) was carried out. It is observed that all points lie below the expected curve (Fig.1). This implies that the codon usage bias is mainly affected by nucleotide composition (in other words - by mutation pressure).

To further explore the codon usage preferential optimization and adaptation of LIV in relation to its vector and hosts CAI analysis was performed. CAI values were calculating keeping *Ixodes ricinus*, *Ovis aries*, *Sus scrofa* and *Bos taurus* codon usage as a reference set. A mean CAI value of 0.658 was obtained for the LIV ORFs in relation to primary vector *Ixodes ricinus* codon usage reference set and mean CAI values of 0.623, 0.689 and 0.711 were obtained for the LIV ORFs in relation to host pig, sheep and cattle (*Ovis aries*, *Sus scrofa* and *Bos taurus*) codon usage reference set respectively. In this study we found a tendency for higher CAI values indicating lower efficiency of translation. A comparison between vector and host indicated a lower CAI for LIV in relation to pig, which leads to lower efficiency of protein synthesis in pig. This suggests that the interplay of codon usage between LIV and its hosts may influence viral fitness, survival and evolution.

Table 1. Nucleotide composition analysis of LIV genome (IR: *Ixodes ricinus*, SS: *Sus scrofa*, OA: *Ovis aries*, BT: *Bos taurus*)

Accession no.	U	C	A	G	U3	C3	A3	G3	AU	GC	AU3	GC3	GC12	ENC	CAI <sup>IR</sup>	CAI <sup>SS</sup>	CAI <sup>OA</sup>	CAI <sup>BT</sup>
NC_001809.1	20.72	22.67	24.47	32.13	18.57	26.53	20.85	34.06	45.19	54.81	39.41	60.59	30.29	53.88	0.658	0.622	0.691	0.711
Y07863	20.72	22.67	24.47	32.13	18.57	26.53	20.85	34.06	45.19	54.81	39.41	60.59	30.29	53.88	0.658	0.622	0.691	0.711
KT224354.1	20.81	22.48	24.57	32.14	18.62	26.47	20.67	34.23	45.38	54.62	39.30	60.70	30.35	54.12	0.657	0.623	0.687	0.711
KP144331.1	20.61	22.59	24.60	32.20	18.16	26.68	20.94	34.23	45.21	54.79	39.09	60.91	30.45	53.89	0.658	0.624	0.689	0.711
KJ495985	20.81	22.48	24.58	32.13	18.62	26.47	20.67	34.23	45.39	54.61	39.30	60.70	30.35	54.15	0.657	0.623	0.687	0.710
KF056331.1	20.74	22.54	24.45	32.27	18.48	26.56	20.59	34.38	45.19	54.81	39.06	60.94	30.47	53.93	0.658	0.622	0.690	0.711
Avg.	20.74	22.57	24.52	32.17	18.50	26.54	20.76	34.20	45.26	54.74	39.26	60.74	30.37	53.97	0.658	0.623	0.689	0.711
Std. D	0.0722	0.0890	0.0652	0.0561	0.1780	0.0756	0.1361	0.1234	0.0961	0.0961	0.1532	0.1532	0.0766	0.1261	0.0005	0.0008	0.0018	0.0004

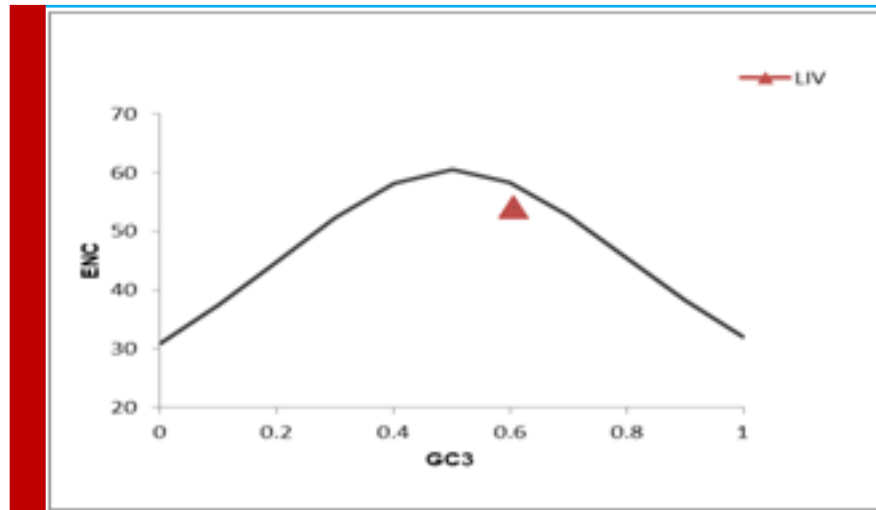


FIGURE 1. Graph showing the relationship between the effective number of codons (ENC) and GC content of the third codon position (GC3).The curve indicates the expected codon usage if GC compositional constraints alone account for codon usage bias.

To investigate the codon usage pattern of virus, an RSCU analysis was performed for the 59 sense codons (Table.2). In LIV among the 18 most abundantly used codons, 12 were G/C-ended (five G-ended, seven C-ended) and the remaining six were A/U-ended ( five A-ended and one U-ended).

To determine the potential influences of the vector and host on the codon usage pattern of the LIV, the RSCU pattern of LIV coding sequence were correlated with those of *Ixodes ricinus* (vector) and pig, sheep and cattle (hosts) (Fig.2).All the 18 most abundantly used codons of vector and host were G/C ending (In *Ixodes ricinus* twelve C-ended and six G-ended, Pig thirteen C-ended and five G-ended, cattle twelve C-ended and six G-ended, and in sheep eleven C-ended codons six G-ended codons and one U-ended codon) we observed a common pattern of preference towards G/C-ended

codons in vector and host. An analysis of over and under - represented codons showed that for LIV 4 out of 18 preferred codons (CUG for Leu, GUG for Val and AGA and GGA for Arg) in *Ixodes ricinus* 11 out of 18 preferred codons (CUG for Leu, AUC for Ile, GUG for Val, AGC for Ser, CCC for Pro, ACC for Thr, GCC for Ala, CAC for His, UGC for Cys, AGG for Arg and GGC for Gly), in cattle 3 out 18 preferred codons (CUG for Leu, GUG for Val and GCC for Ala), in sheep 5 out of 18 preferred codons (CUG and CUC for Leu, AUC for Ile, GUG for Val and ACC for Thr), and in pig 6 out of 18 preferred codons (CUG for Leu, AUC for Ile, GUG for Val, AGC for Ser and ACC for Thr, GCC for Gly) had RSCU value >1.6, whereas the remaining preferred codons had RSCU values >0.6 and <1.6. CUG for Leu and GUG for Val are common over-represented codons in virus vector and hosts.

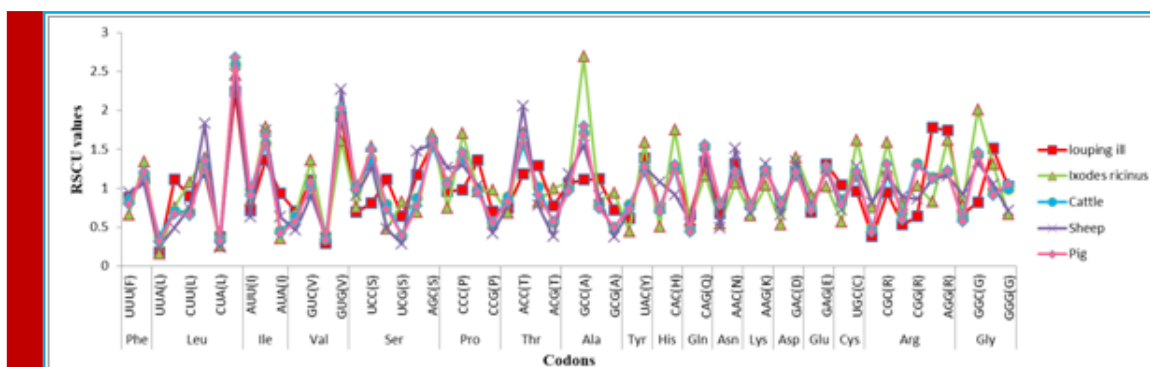


FIGURE 2. Comparative analysis of relative synonymous codon usage (RSCU) patterns between virus, vector and three hosts (cattle, sheep and pig).

Table 2. The relative synonymous codon usage patterns of LIV, its host (cattle, sheep and pig) and primary transmission vector ( <i>Ixodes ricinus</i> )						
AA	Codon	Pathogen	Vector	Host		
		louping ill	<i>Ixodes ricinus</i>	Cattle	Sheep	Pig
Phe	UUU	0.88	0.66	0.85	0.94	0.79
	UUC	1.12	1.34	1.15	1.06	1.21
	UUA	0.18	0.16	0.38	0.24	0.32
Leu	UUG	1.11	0.75	0.71	0.49	0.67
	CUU	0.90	1.08	0.7	0.74	0.65
	CUC	1.2	1.40	1.26	1.83	1.35
	CUA	0.37	0.26	0.36	0.24	0.33
	CUG	2.24	2.45	2.59	2.46	2.68
	AUU	0.71	0.85	0.98	0.63	0.91
Ile	AUC	1.36	1.79	1.57	1.74	1.67
	AUA	0.93	0.36	0.45	0.63	0.42
	AUG	0.7	0.68	0.64	0.46	0.57
Val	GUC	1.1	1.36	1.01	0.91	1.07
	GUA	0.29	0.35	0.4	0.36	0.34
	GUG	1.92	1.61	1.95	2.27	2.03
	GUU	0.69	0.76	1.04	0.91	0.99
Ser	UCC	0.81	1.54	1.37	1.28	1.5
	UCA	1.11	0.48	0.79	0.48	0.73
	UCG	0.64	0.83	0.39	0.28	0.39
	AGU	1.17	0.69	0.87	1.48	0.77
	AGC	1.58	1.70	1.53	1.58	1.62
	CCU	0.96	0.75	1.08	1.26	1.05
Pro	CCC	0.98	1.70	1.39	1.29	1.46
	CCA	1.36	0.96	1	1.03	0.94
	CCG	0.7	0.98	0.53	0.42	0.56
	ACU	0.75	0.68	0.89	0.78	0.83
Thr	ACC	1.18	1.71	1.55	2.05	1.68
	ACA	1.29	0.82	1.01	0.78	0.92
	ACG	0.77	1.00	0.56	0.38	0.57
	GCU	1.06	1.07	1	1.18	0.96
Ala	GCC	1.11	2.69	1.71	1.55	1.8
	GCA	1.12	0.84	0.8	0.9	0.74
	GCG	0.72	0.95	0.48	0.37	0.5
	UAU	0.61	0.45	0.79	0.72	0.73
Tyr	UAC	1.39	1.59	1.21	1.28	1.27
	CAU	0.75	0.50	0.75	1.08	0.7
His	CAC	1.25	1.75	1.25	0.92	1.3

Gln	CAA	0.66	0.60	0.46	0.57	0.44
	CAG	1.34	1.16	1.54	1.43	1.56
Asn	AAU	0.68	0.55	0.81	0.49	0.79
	AAC	1.32	1.07	1.19	1.51	1.21
Lys	AAA	0.79	0.65	0.78	0.68	0.76
	AAG	1.21	1.04	1.22	1.32	1.24
Asp	GAU	0.8	0.54	0.84	0.66	0.8
	GAC	1.2	1.40	1.16	1.34	1.2
Glu	GAA	0.69	0.91	0.78	0.75	0.72
	GAG	1.31	1.02	1.22	1.25	1.28
Cys	UGU	1.04	0.57	0.85	0.72	0.79
	UGC	0.96	1.62	1.15	1.28	1.21
Arg	CGU	0.38	0.75	0.49	0.82	0.44
	CGC	0.94	1.59	1.17	1.15	1.31
	CGA	0.53	0.80	0.68	0.89	0.6
	CGG	0.64	1.04	1.32	0.86	1.29
	AGA	1.78	0.83	1.14	1.12	1.12
	AGG	1.74	1.62	1.2	1.16	1.23
Gly	GGU	0.66	0.78	0.64	0.92	0.57
	GGC	0.82	2.01	1.43	1.33	1.46
	GGA	1.51	1.31	0.95	1.05	0.91
	GGG	1.02	0.67	0.99	0.71	1.05

None of the preferred codons were under-represented (RSCU<0.6). UUA and CUA for Leu and GUA for Val are common underrepresented codons in virus, vector and hosts. Interestingly, a mixture of coincidence and antagonism was observed in the codon usage pattern as LIV showed no complete coincidence or complete antagonism to any of the patterns of its vector and host. Among the 18 most abundantly used codons, the ratio of

coincident/antagonist preferred codon was 12:6 between virus vector and hosts.

## CONCLUSION

Our analysis has provided an insight into codon usage pattern of LIV virus and its relationship with host and vector. We observed that the codon usage bias of LIV is

Strain Name	Virus Type	GenBank Accession	Sequence Length	ORF	ORF Length	Collection Date	Host	GenBank Host	Country
369/T2	LIV	NC_001809	10871	130-10374	10245	-N/A-	Unknown	-N/A-	-N/A-
369/T2	LIV	Y07863	10871	130-10374	10245	-N/A-	Unknown	-N/A-	-N/A-
LEIV-7435Tur	LIV	KT224354	10829	106-10350	10245	-N/A-	Tick	Hyalomma marginatum (tick)	Turkmenistan
LI3/1	LIV	KP144331	10880	133-10377	10245	1962	Sheep	Ovis aries	United Kingdom
Primorye-185-91	LIV	KJ495985	10871	129-10373	10245	07/22/1991	Human	Homo sapiens	Russia
Penrith	LIV	KF056331	10875	132-10376	10245	2009	Sheep	Ovis aries	United Kingdom



slightly biased which reflects that the key role played by mutation pressure and natural selection. Our observations suggest that codon usage of LIV is an evolutionary process. However, a more comprehensive analysis with higher sample sizes is needed as this study and subsequent analysis is based on a relatively small sample size.

## REFERENCES

- Butt AM, Nasrullah I, Qamar R, Tong Y. (2016) Evolution of codon usage in Zika virus genomes is host and vector specific. *Emerg Microbes Infect.* 5(10):e107.
- Butt A.M., Nasrullah I., Tong Y. (2013) Genome-Wide Analysis of Codon Usage and Influencing Factors in Chikungunya Viruses. *PLoS One* 9(3): e90905, Vol.9
- Dobler G. (2010) Zoonotic tick-borne flaviviruses, *Vet Microbiol.* vol. 140(3-4):221-8.
- Gao GF, Zannotto PM, Holmes EC, Reid HW, Gould EA. (1997) Molecular variation, evolution and geographical distribution of louping ill virus. *Acta Virol.* 41 (5):259-68.
- Gonzalez L, Reid HW, Pow I, Gilmour JS. (1987) A disease resembling louping-ill in sheep in the Basque region of Spain. *Vet Rec.* 121(1), 12-3.
- Grard G., Moureau G., Charrel RN, Lemasson JJ., et al. (2007) Genetic characterization of tick-borne flaviviruses: new insights into evolution, pathogenetic determinants and taxonomy. *Virology.*
- Jeffries CL., Mansfield KL., Phipps LP., Wakeley PR., et al. (2014) Louping ill virus: an endemic tick-borne disease of Great Britain, *J Gen Virol.* vol 95, 1005-1014.
- Jiang WR, Lowe A, Higgs S, Reid H, Gould EA. (1993) Single amino acid codon changes detected in louping ill virus antibody-resistant mutants with reduced neuro virulence., *J Gen Virol.* 74, 931-5.
- Mansfield KL, Morales AB, Johnson N, Ayllón N., et al. (2015) Identification and characterization of a novel tick-borne *Flavivirus* subtype in goats (*Capra hircus*) in Spain. *J Gen Virol.* vol. 96, 1676-1681.
- McGuire K., Holmes EC., Gao GF., Reid HW., Gould EA. (1998) Tracing the origins of louping ill virus by molecular phylogenetic analysis. *J Gen Virol* , vol-79 pg 981-988.
- Mune A., Pandey.A., Pandey.K.M.(2017) Genome-wide comparative analysis of the codon usage pattern in Flaviviridae family, *Biosci. Biotech. Res. Comm.* 10(4): 680-688
- Puigbò P, Bravo IG, Garcia-Vallvé S. (2008) E-CAI: a novel server to estimate an expected value of Codon Adaptation Index (eCAI). *BMC Bioinformatics.* 29; 9:65.
- Sharp PM, Tuohy TM, Mosurski KR. (1986) Codon usage in yeast: cluster analysis clearly differentiates highly and lowly expressed genes. *Nucleic Acids Res.* 14(13):5125-43.
- Tao P, Dai L, Luo M, Tang F, Tien P, Pan Z. (2009) Analysis of synonymous codon usage in classical swine fever virus. *Virus Genes*, 38, 104-12.
- Velazquez-Salinas L, Zarate S, Eschbaumer M, Pereira Lobo F, et al. (2016) Selective Factors Associated with the Evolution of Codon Usage in Natural Populations of Arboviruses. *PLoS One*, 11(7):e0159943.
- Wang M, Liu YS, Zhou JH, Chen HT, YX, Zhang J., et al. (2011) Analysis of codon usage in Newcastle disease virus. *Virus Genes*, Vol 42, 245-53.
- Wright F. (1990) the 'effective number of codons' used in a gene, *Gene*, Vol.87, 23-29.
- Xiang H, Zhang R, Butler RR 3rd, Liu T, Zhang L, Pombert JF, Zhou Z. (2015) Comparative Analysis of Codon Usage Bias Patterns in Microsporidian Genomes. *PLoS One.* 9;10(6):e0129223.
- Zhang J, Wang M, Liu WQ, Zhou JH, Chen HT, Ma LN, Ding YZ, Gu YX, Liu YS. (2011) Analysis of codon usage and nucleotide composition bias in polioviruses. *Viol J.*, 8:146.