



The bark of *Salvadora persica* is slightly rough, grayish brown on main stem, paler elsewhere. Research studies have revealed many phytochemical constituents to be present in its bark such as caffeine, theobromine, trigonelline, ursolic acid, oleanolic acid and trimethylamine (Anthony et al., 2015; Abeer et al., 2011). Various studies have reported several activities of *Salvadora persica* bark including anti-gonorrhea (Shokeen et al., 2009), tonic, and stimulant in low fever, ascariifuge, gastric troubles (Verma et al., 2009). Other studies have reported its bark as vesicant and stimulant, to relieve cough and used as purgative, (Mathur et al., 2015). Bark was used to treat sores (Anthony et al., 2015). Ursolic acid and oleanolic acid was extracted from *Salvadora persica* bark. Ursolic acid inhibited tumorigenesis, tumor promotion, invasion, metastasis, angiogenesis and induction of tumor cell differentiation. Oleanolic acid has hepato-protective, antistomach ulcer, hypoglycemic, anti-hyperlipidemic, anti-hypertensive, cardio-tonic, anti-dysrhythmic, anti-aggregation of blood platelet, anti-cancer, protection of renal toxicity, anti-inflammatory, anti-microbial and anti-fertility activities with low toxicity (Abeer et al., 2011, Malviya et al 2019).

## MATERIAL AND METHODS

**Material:** *Salvadora persica* bark was collected from Shiddhbaba Ashram Ghanghauri Aligarh, India. Dried bark was powdered using electric granulating machine. Plant was authenticated by school of biotechnology, Gautam Buddha University (state government university) Greater Noida, India. Chemicals; Chloroform, Ethyl Acetate, Methanol, Ethanol was provided by research lab of SMAS Department, Galgotias University.

Method of extraction of plant material: Modified fractional maceration method was used to extract the plant material. Dried coarse powder of stem was placed in round bottom flask (RBF). Required amount of selected solvent were poured in RBF. RBF kept for 24 hours with occasionally shaking. Strained off the liquid part and repeated it three times. Liquid part was filter and concentrate. Remaining part of powder was treated with different solvent and repeats the process (Kumar et al., 2014).

Determination of % yield of extract: % Yield = Practical Yield \* 100 / Theoretical Yield Solubility studies of extract: *Salvadora persica* bark extracts were shaken in different solvent and observed their solubility (Malviya., 2011). Determination of pH of extract: 1 gram of *Salvadora persica* bark extract was dissolved in 100ml distilled water and determined pH using digital pH meter (Malviya., 2011).

**Phytochemical studies of the extract:** Phytochemical assays were done to reveal the pharmacological active substances in extract using test methods described previously (Peach et al., 1955). Phytochemical substances were evaluated using various methods such

as Dragendorff test, Wagner test, Hager's test, Legal test, Ferric chloride test, Froth formation test, Zinc Hydrochloride reduction test, Biuret test, Molish's test, and Libermann-Burchard test.

**Determination of microbial load in extract:** Microbial load of extract was determined using modified spread method previously described (Mamun et al., 2014). 1000µg/ml of extract solutions was prepared. Sterile plates of nutrients agar were prepared and extract solution spread on them. Prepared plates were incubated in incubator for 48 hours. Microbial colonies formed on agar plates were counted using colony counter in CFU (colony forming unit). Limit test for heavy metals of extract: Limit test for heavy metals (lead, arsenic) were performed as 'Indian Pharmacopoeial' procedure (Indian Pharmacopoeia., 1996).

**Determination and validation of  $\lambda_{max}$  of extract:** The solutions of different concentration of extract (SPBEC, SPBEEA, SPBEM, SPBEE and SPBEW) were prepared using buffer solution of 0.1 N HCL, phosphate buffer pH 6.8, phosphate buffer pH 7.4. Wavelengths of extract were recorded at absorbance less than one at the range of 200-800nm TID (Three times a day) for six days, (Malviya et al., 2019).

**DPPH radicals scavenging activity of extract:** DPPH radical scavenging assay (Verma et al., 2012) was used to evaluate the antioxidant potential of extract. 0.1mM DPPH solution was prepared in methanol and kept in dark place. Extract solution of different concentration (20, 40, 60, 80, 100µg/ml) were prepared in methanol and sonicated to obtained complete solubility. Ascorbic acid solutions were used as standard drug solution. Extract and ascorbic acid solutions were mixed in DPPH solution separately and allowed to stand for 30 minutes. Absorbance was recorded at 517nm using Shimadzu spectrophotometer. Methanol was used as control solution. Percentage DPPH scavenging was calculated using following equation.

$$\text{DPPH scavenged (\%)} = \frac{[(\text{Abs control} - \text{Abs extract}) / \text{Abs control}] \times 100}{1}$$

Abs control - is the absorbance of the control reaction  
Abs extract - is the absorbance in the presence of the sample of the extracts

**H<sub>2</sub>O<sub>2</sub> scavenging activity of extract:** H<sub>2</sub>O<sub>2</sub> scavenging assay (Jayaprakash et al., 2004) was used to evaluate the antioxidant activity of extract. Extract of different concentration (20, 40, 60, 80, 100 µg/ml) were prepared. 40mM solution of H<sub>2</sub>O<sub>2</sub> was prepared in phosphate buffer solution pH 7.4. Extract of different concentration (5ml) and H<sub>2</sub>O<sub>2</sub> solution (5ml) was mixed in 10 ml volumetric flask. Absorbance was recorded at 230nm using Shimadzu spectrophotometer. Phosphate buffer solution pH 7.4 was used as control solution. Percentage H<sub>2</sub>O<sub>2</sub> scavenging was calculated using following equation.

$$\% \text{ H}_2\text{O}_2 \text{ scavenging ability of extract} = \frac{[(\text{Abs control} -$$

$$\frac{\text{Abs extract}}{\text{Abs control}} \times 100$$

Abs control - is the absorbance of the blank solution

Abs extract - is the absorbance in the presence of the sample of the extracts.

**Antimicrobial activity of extract:** Disc diffusion method was used to determine antimicrobial potential of extract. Test microbes gram positive (*Bacillus subtilis*) and gram negative (*Escherichia coli*) was obtained from Department of Medical Lab Technology, School of Medical and Allied Sciences, Galgotias University, India. In this method, Petri dishes were washed and sterile using autoclave. These sterile petri dishes were used to prepare MH agar plates. Microbial solution was spread on surface of agar plate using cotton. Extract and ciprofloxacin solution contain Disc were applied on microbial surface of MH agar plate. Agar plates were incubated in incubator for 24 hours. Antimicrobial potential of extract was inhibited the growth of microbes. Microbial free area was measured in millimeter (Shubha et al., 2010).

**FTIR analysis of extract:** FTIR analysis (Kumar et al., 2015) is considered as most important tool for identifying the types of functional group present in sample. The wavelength absorbed light is recorded in spectrum. By interpreting the data of wavelength, chemical bond or possible functional group can be determined. Dried powders of different solvent extract of *Salvadora persica* bark was used to FTIR analysis. 10mg of dried extract was encapsulated in 90mg of KBr pellet to prepared sample discs. Sample of extract was loaded to Shimadzu FTIR spectroscope with the range of 400-4000cm<sup>-1</sup> with resolution of 4cm<sup>-1</sup>.

## RESULTS AND DISCUSSION

Percentage yield of extract was affected by various factors such as solvent, temperature, pH, tome and composition of plant material. In this research, *Salvadora persica* bark extract was obtained using different solvent such as chloroform, ethyl acetate, methanol, ethanol and water. The obtained comparative results were reported in table 1.

Extract	% yield
SPBEC	0.50
SPBEEA	0.20
SPBEM	1.96
SPBEE	1.81
SPBEW	1.05

Solubility is a most important factor that affects the therapeutic effect of drugs. Solubility of different extract of *Salvadora persica* bark were observed in cool and hot water, 0.1N HCl, phosphate buffer solution pH 6.8 and 7.4. SPBEC and SPBEEA were found to be insoluble in cool water and partial soluble in hot water. All extracts

were found to be soluble in 0.1N HCl, phosphate buffer solution pH 6.8 and 7.4. Obtained results were listed in table 2.

Table 2. Solubility study of *Salvadora persica* leaves extract

	SPBEC	SPBEEA	SPBEM	SPBEE	SPBEW
Cool water (25°C)	IN	IN	S	S	S
Hot water (40°C)	PS	PS	S	S	S
0.1N HCL	S	S	S	S	S
Phosphate buffer pH 6.8	S	S	S	S	S
Phosphate buffer pH 7.4	S	S	S	S	S

S: Soluble, PS: Partial soluble, IN: insoluble

Prepared 1% solution of extracts were used to determine pH and found to be near neutral as listed in table 3. Based on these results, it may claim that when extract will use in formulation shows no irritation effect.

Table 3. pH of extract

1% solution of extract	pH
SPBEC	7.0±0.2
SPBEEA	7.0±0.1
SPBEM	6.8±0.2
SPBEE	6.6±0.1
SPBEW	6.9±0.2

Phytochemical assay revealed many bioactive substances present in the extract as listed in table 4.

No microbial colony was found on agar plates. Absence of microbes in extract might be due to use of chloroform, ethyl acetate, methanol and ethanol during the fractional maceration process. Limit tests were confirmed the absence of heavy metal (lead, arsenic) in extract. Procedure discussed in the present manuscript provides an accurate and convenient method to determine and validate the  $\lambda_{\text{max}}$  of unknown sample. The different concentrations of extract in different buffer solution were obtained and recorded in table 5.

DPPH scavenging method was confirmed the antioxidant potential of extract. Percentage inhibitions of DPPH and comparative potential of extract and ascorbic acid were presented in figure 1 and calculated IC<sub>50</sub> values were listed in table 6.

H<sub>2</sub>O<sub>2</sub> scavenging method was used to determined antioxidant activity of *Salvadora persica* stem extracts (SPBEC, SPBEEA, SPBEM, SPBEE and SPBEW). Obtained percentage inhibition and comparative assessment was

showed in figure 2 and calculated IC50 presented in table 7.

Obtained result were confirmed the antimicrobial activity of extract. Comparative of result of extract and ciprofloxacin was presented in table 8.

	Test performed	SPBEC	SPBEEA	SPBEM	SPBEE	SPBEW
Alkaloids	Dragendorff test, Wagner test, Hager's test	-	-	+	+	+
Glycosides	Legal test	-	-	+	+	+
Tannins	Ferric chloride test	-	-	+	+	+
Saponins	Froth formation test	-	-	+	+	+
Flavonoids	Zinc Hydrochloride reduction test	+	-	+	+	+
Proteins	Biuret test	-	-	+	+	+
Carbohydrates	Molish's test	-	-	+	+	+
Sterols and Terpenoids	Libermann-burchard test	+	-	+	+	+

Table 5. Determination and validation of  $\lambda_{max}$  of extract

Extracted part of plant	Solvent used in extraction	Buffer solution used for dilution	Day 1			Day 2			Day 3			Day 4			Day 5			Day 6			
			9:30 am	12:30 pm	4:30 pm	9:30 am	12:30pm	4:30 pm	9:30 am	12:30 pm	4:30 pm	9:30 am	12:30 pm	4:30 pm	9:30 am	12:30 pm	4:30 pm	9:30 am	12:30 pm	4:30 pm	
Bark	Chloroform	0.1 N HCL	670.0 ±3.5	670.0 ±1.0	670.0 ±0.0	676.0 ±2.5	676.0 ±2.0	676.0 ±1.5	768.0 ±2.0	768.0 ±2.0	768.0 ±4.0	723.0 ±5.0	723.0 ±2.5	723.0 ±6.0	748.5 ±5.5	748.5 ±3.5	748.5 ±3.5	792.5 ±5.0	780.0 ±2.0	780.0 ±1.0	
		PBS pH 6.8	670.0 ±0.0	670.0 ±1.0	670.0 ±2.0	673.0 ±0.0	673.0 ±0.0	673.0 ±0.0	678.0 ±2.0	678.0 ±0.0	678.0 ±0.0	672.5 ±0.5	672.5 ±0.5	672.5 ±1.5	673.0 ±0.0	673.0 ±0.0	673.0 ±0.0	673.0 ±0.0	673.0 ±0.0	673.0 ±0.0	673.0 ±0.0
		PBS pH 7.4	691.5 ±5.0	691.5 ±3.5	691.5 ±0.5	676.0 ±2.0	674.0 ±0.0	674.0 ±0.0	670.0 ±0.0	670.0 ±0.0	670.0 ±0.0	748.5 ±2.5	748.5 ±1.5	748.5 ±0.5	536.5 ±4.5	536.5 ±2.5	536.5 ±2.5	651.0 ±0.0	651.0 ±1.0	651.0 ±2.0	
		0.1 N HCL	204.5 ±1.5	204.5 ±0.5	204.5 ±1.5	204.5 ±0.5	204.5 ±0.5	204.5 ±0.5	205.5 ±0.5	205.5 ±1.5	205.5 ±0.5	205.5 ±0.5	205.5 ±1.5	205.5 ±0.5	205.5 ±1.5	205.5 ±0.5	205.5 ±0.5	204.5 ±0.5	204.5 ±0.5	204.5 ±1.5	
		PBS pH 6.8	674.0 ±0.0	674.0 ±0.0	674.0 ±0.0	676.0 ±0.0	676.0 ±0.0	676.0 ±0.0	674.0 ±0.0	674.0 ±0.0	674.0 ±0.0	676.0 ±0.0	676.0 ±0.0	676.0 ±0.0	676.0 ±0.0	676.0 ±0.0	676.0 ±0.0	670.0 ±0.0	670.0 ±0.0	670.0 ±0.0	
		PBS pH 7.4	212.5 ±0.5	213.0 ±1.0	213.0 ±1.0	211.5 ±0.5	211.0 ±1.5	211.0 ±1.0	211.5 ±0.5	212.0 ±1.5	212.0 ±1.5	211.5 ±0.5	212.0 ±1.0	212.0 ±1.0	213.0 ±0.0	213.0 ±1.0	213.0 ±1.0	211.0 ±1.0	211.0 ±1.0	211.0 ±1.0	
	Methanol	0.1 N HCL	272.5 ±1.5	272.5 ±1.5	272.0 ±1.0	272.5 ±1.5	272.5 ±1.5	272.5 ±1.5	272.5 ±1.5	272.0 ±1.0	272.0 ±1.0	273.0 ±0.0	273.0 ±0.0	273.0 ±0.0	278.0 ±5.0	276.0 ±1.0	276.0 ±0.0	273.0 ±0.0	273.0 ±0.0	273.0 ±0.0	
		PBS pH 6.8	272.5 ±0.5	272.5 ±0.5	272.0 ±0.0	272.5 ±0.5	272.0 ±0.0	272.5 ±0.5	272.0 ±0.0	272.5 ±0.5	272.0 ±0.0	271.0 ±1.0	271.0 ±1.0	271.0 ±1.0	271.5 ±0.5	271.0 ±1.0	271.0 ±1.0	271.5 ±0.5	271.0 ±1.0	271.0 ±1.0	
		PBS pH 7.4	272.0 ±0.0	272.5 ±0.5	272.0 ±0.0	272.0 ±0.0	272.5 ±0.5	272.0 ±0.0	272.0 ±0.0	272.5 ±0.5	272.0 ±0.0	272.0 ±0.0	272.0 ±0.5	272.0 ±0.0	274.0 ±1.0	274.0 ±2.0	274.0 ±1.0	272.0 ±0.0	272.5 ±0.5	272.0 ±0.0	
		0.1 N HCL	272.0 ±0.0	272.0 ±0.0	272.0 ±0.0	272.0 ±0.0	272.0 ±0.0	270.5 ±0.5	271.0 ±1.0	271.0 ±1.0	272.5 ±0.5	272.0 ±0.0	272.0 ±0.0	272.0 ±0.0	271.0 ±1.0	271.0 ±1.0	271.0 ±1.0	272.5 ±0.5	272.0 ±0.0	272.0 ±0.0	
		PBS pH 6.8	272.0 ±0.0	272.0 ±0.0	272.0 ±0.5	272.5 ±0.0	272.0 ±0.0	272.0 ±0.0	272.0 ±0.0	272.0 ±0.0	272.0 ±0.0	272.0 ±0.0	272.0 ±0.0	272.0 ±0.0	272.0 ±0.0	272.0 ±0.0	272.0 ±0.0	271.5 ±0.5	272.0 ±0.0	272.0 ±0.0	
		PBS pH 7.4	272.5 ±0.5	272.0 ±0.0	272.0 ±0.0	272.0 ±0.0	272.0 ±0.0	272.0 ±0.5	272.0 ±0.0	272.0 ±0.0	272.0 ±0.0	272.0 ±0.0	272.0 ±0.0	272.0 ±0.0	274.5 ±1.5	273.0 ±1.0	273.0 ±1.0	272.5 ±0.0	272.0 ±0.0	272.0 ±0.0	
	Water	0.1 N HCL	272.0 ±0.0	272.0 ±0.0	272.0 ±0.0	271.5 ±0.5	271.0 ±1.0	271.0 ±1.0	272.5 ±0.5	272.0 ±0.0	272.0 ±0.0	272.0 ±0.0	272.0 ±0.0	272.0 ±0.0	273.5 ±1.5	273.0 ±1.0	273.0 ±1.0	271.5 ±0.5	272.0 ±0.0	272.0 ±0.0	
		PBS pH 6.8	271.5 ±1.5	271.0 ±1.0	271.0 ±1.0	272.0 ±0.0	272.0 ±0.0	272.0 ±0.0	270.5 ±1.5	271.0 ±1.0	271.0 ±1.0	272.0 ±0.0	272.0 ±0.0	272.0 ±0.0	268.0 ±3.0	269.0 ±2.0	269.0 ±2.5	268.0 ±2.0	268.0 ±0.0	268.0 ±0.0	
		PBS pH 7.4	272.0 ±0.5	272.0 ±0.0	272.0 ±0.0	272.0 ±0.0	272.0 ±0.0	272.0 ±0.0	270.5 ±1.5	271.0 ±1.0	271.0 ±1.0	271.0 ±1.0	271.0 ±1.0	271.0 ±1.0	272.5 ±1.5	272.0 ±0.0	272.0 ±0.0	271.0 ±0.0	271.0 ±0.0	271.0 ±0.0	



Figure 1: Comparative assessment of antioxidant potential (using DPPH scavenging model) of SPBEC: *Salvadora persica* bark extract in chloroform, SPBEEA: *Salvadora persica* bark extract in ethyl acetate, SPBEM: *Salvadora persica* bark extract in methanol, SPBEE: *Salvadora persica* bark extract in ethanol, SPBEW: *Salvadora persica* bark extract in water, AA: Ascorbic acid.

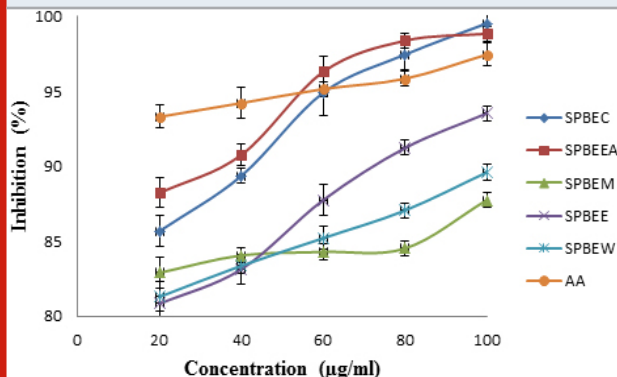


Figure 2: Comparative assessment of antioxidant potential of extract using H<sub>2</sub>O<sub>2</sub> scavenging model.

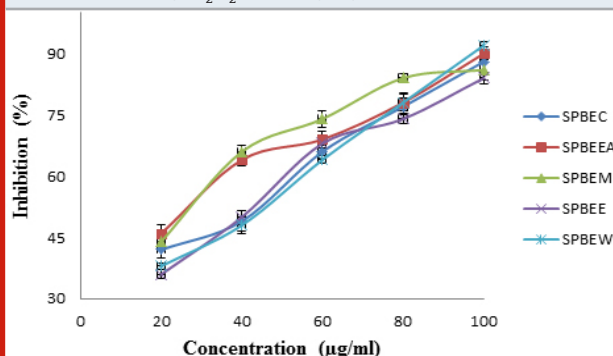


Table 6. IC<sub>50</sub> of *S. persica* bark

Sample	DPPH assay IC-50(µg/ml)
SPBEC	192.05
SPBEEA	248.88
SPBEM	633.00
SPBEE	163.17
SPBEW	289.20
AA	861.42

Table 7. IC<sub>50</sub> of *S. persica* stem

Extract	H <sub>2</sub> O <sub>2</sub> assay IC <sub>50</sub> (µg/ml)
SPBEC	36.00
SPBEEA	21.96
SPBEM	19.21
SPBEE	39.33
SPBEW	39.71

Figure 4: FTIR of SPBEEA

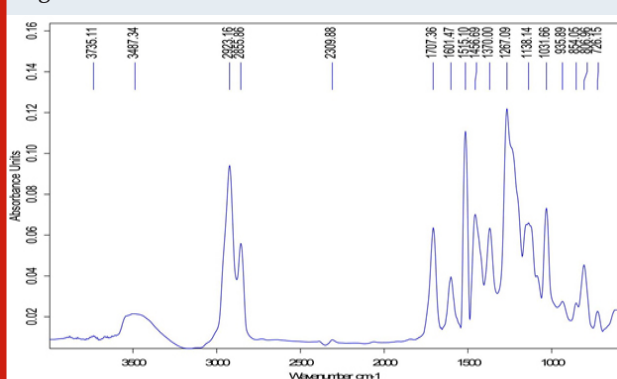
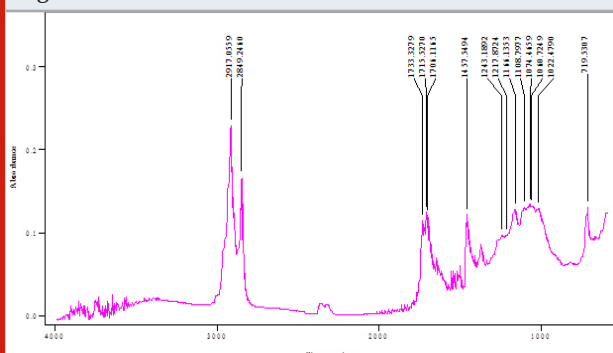


Figure 3: FTIR of SPBEC



FTIR spectra of *Salvadora persica* bark extracts (SPBEC, SPBEEA, SPBEM, SPBEE and SPBEW) were measured and presented in figures 3 to 7. Recorded wavelengths and the probable functional groups (obtained by FTIR analysis) were obtained in the extracts were reported. By interpreting the data and find possible functional groups were listed in table 9,10,11,12,13.

Table 8. Antimicrobial activity of extract

Bacteria type	Zone of inhibition (mm)											
	SPBEC (µg/ml)		SPBEEA (µg/ml)		SPBEM (µg/ml)		SPBEE (µg/ml)		SPBEW (µg/ml)		Ciprofloxacin (µg/ml)	
	100	200	100	200	100	200	100	200	100	200	100	200
<i>E. Coli</i>	3	6	2	5	3	7	3	6	4	6	6	18
<i>B. Subtilis</i>	3	5	3	6	4	6	4	7	3	4	5	16



antioxidant activity of extract. Disc diffusion method was confirmed antimicrobial response of extract. FTIR analysis of extract was used to detect characteristic peak range and the presence of possible functional groups.

## ACKNOWLEDGEMENTS

Authors would like to thank Department of Pharmacy, School of Medical and Allied Sciences, Galgotias University, for provide lab facility during research work.

## REFERENCES

- Abeer, YI., El-Gengaihi, SE., Motawe, HM. (2011). Phytochemical and cytotoxicity investigations of *Salvadora persica* bark extracts, Journal of The Arab Society for Medical Researches, 6(2):127-133.
- Anthoney, ST., Lasity, TT. (2015). Phytochemical and Antibacterial Evaluation of Ethanolic extract of *Salvadora persica* Root Extract against Selected microorganisms. International Journal of Bioassays, 4.12: 4658-4666.
- Bargah, RK. (2015). Preliminary test of phytochemical screening of crude ethanolic and aqueous extract of *Moringa pterygosperma* Gaertn, Journal of pharmacognosy and phytochemistry, 4(1): 7-9.
- Chabane, OA., Saada, DA., Bekada, AMA., Selselet-Attou G.(2017). In vitro study of the antimicrobial effects of phenolic extract of the *Salvadora persica* (Miswak) on the growth of certain microorganisms responsible for oral infections. Res. J. Microbiol., 12: 58-73.
- HOI. (1996). Indian Pharmacopoeia, 7th ed. New Delhi, India: Government of India, Controller of Publications; volume II. pp. A-42(arsenic), A-44(lead).
- Jayaprakasha, GK., Jaganmohan, RL., Sakariah, KK. (2004). Antioxidant activities of flavidin in different in vitro model systems. Bioorg. Med. Chem. 12:5141-5146.
- Kumar, D., Singhal, A., Bansal, S., Gupta, SK. (2015). Extraction, isolation and evaluation *Trigonella foenumgraecum* as mucoadhesive agent for nasal gel drug delivery. J Nepal Pharm Asso. 27:40-45.
- Kumar, RA., Swamy, MR. (2014). Phytochemical screening by FTIR spectroscopic analysis of leaf extracts of selected Indian Medicinal plants, Int. J. Curr. Microbiol. App. Sci, 3(1): 395-406.
- Malviya R. (2011). Extraction characterization and evaluation of selected mucilage as pharmaceutical excipients. Polim. Med. 41(3): 39-44.
- Malviya, R., Sharma, P.K., Dubey, S.K. (2019). Microwave Facilitated Green Synthesis and Characterization of Acrylamide Grafted Copolymer of Kheri (*Acacia chundra*) Gum Polysaccharide, The Natural Products Journal, 9: 1.
- Mamun, AA., Shaha, TK., Khan, MM., Kabir, MS. (2014). Determination of Microbial Load in Multivitamin and Cough Syrups Sold in Dhaka City, International Journal of Pharmaceutical Sciences and Drug Research, 6(3): 235-238.
- Mathur, S. (2015). Medicinally Potent and Highly Salt Tolerant Plant of Arid Zone - *Salvadora persica* L. (Meswak): A Review. Journal of Plant Sciences. 3:1 (1): 45-49.
- Peach, K., Tracy, MV. (1955). Modern Methods of Plant Analysis. Vol III and IV Springer, Heidelberg; pp. 258-61.
- Shokeen P, Bala M, Tandon V.(2009) Evaluation of the activity of 16 medicinal plants against *Neisseria gonorrhoeae*, International Journal of Antimicrobial agents, Elsevier 33: 86-91.
- Shubha HS, Hiremath RS. Evaluation of antimicrobial activity of Rasaka Bhasma, Ayu., 2010; 31(2): 260-262.
- Verma R, Purohit S, Bhandari A, Kumar B, Priyanka P (2009). *Salvadora persica* L (Tooth Brush Tree): A Review, Journal of Pharmacy Research 2(12): 1809-1812.
- Verma S, Gupta A, Kushwaha P, Khare V, Srivastava S, Rawat, A.K.S.(2012) Phytochemical Evaluation and Antioxidant Study of *Jatropha curcas* Seeds. Phcog. J. 2012; 4(29): 5-54.