

## On the prevalance of selected serotypes of enterobacteriaceae pathogens isolated from polluted ecosystem

G. Archana<sup>1</sup> and Judia Harriet Sumathy V<sup>2</sup>

<sup>1</sup>Research Scholar, PG Department of Biotechnology, Women's Christian College, Chennai, India

<sup>2</sup>Associate Professor, PG Department of Biotechnology, Women's Christian College, Chennai, India

### ABSTRACT

*Salmonella* is a genus of rod shaped (bacillus) Gram negative bacteria of the family Enterobacteriaceae. *Salmonella* species are non-spore-forming, predominantly motile with cell diameters between 0.7 and 1.5  $\mu\text{m}$ , lengths from 2 to 5  $\mu\text{m}$ , and peritrichous flagella (all around the cell body). They are chemotrophs, obtaining their energy from oxidation and reduction reactions using organic sources. They are also facultative aerobes, capable of generating ATP with oxygen ("aerobically") when it is available, or when oxygen is not available, using other electron acceptors or fermentation ("anaerobically"). *Salmonella* species are intracellular pathogens; certain serotypes cause illness. Non-typhoidal serotypes can be transferred from animal-to-human and from human-to-human. They usually invade only the gastrointestinal tract and cause Salmonellosis, the symptoms of which can be resolved without antibiotics. Typhoidal serotypes can only be transferred from human-to-human, and can cause food-borne infection, typhoid fever, and paratyphoid fever. Typhoid fever is caused by *Salmonella* invading the bloodstream (the typhoidal form), or in addition spreads throughout the body, invades organs, and secretes endotoxins (the septic form). This can lead to life-threatening hypovolemic shock and septic shock, and requires intensive care including antibiotics. The present study is aimed at studying the Serotype of this Enterobacteriaceae pathogen isolated from sewage and drinking water environments.

**KEY WORDS:** ENTEROBACTERIACEAE, SALMONELLA, TYPHOIDAL SEROTYPE, SEWAGE AND DRINKING WATER ENVIRONMENTS

**Article Information:**\*Corresponding Author: [judiawcc@gmail.com](mailto:judiawcc@gmail.com),

Received 16/06/2018 Accepted after revision 15/09/2018

Published: 30th Sep 2018 Pp- 409-415

This is an open access article under Creative Commons License,

Published by Society for Science & Nature, Bhopal India.

Available at: <https://bbrc.in/>

Article DOI: <http://dx.doi.org/10.21786/bbrc/11.3/9>

## INTRODUCTION

*Salmonella* species are facultative intracellular pathogens. A facultative organism uses oxygen to make ATP; when it is not available, it “exercises its option”—the literal meaning of the term—and makes ATP by fermentation, or by substituting one or more of four less efficient electron acceptors as oxygen at the end of the electron transport chain: sulfate, nitrate, sulfur, or fumarate Cabada *et al.*, 1975). Most infections are due to ingestion of food contaminated by animal feces, or by human feces. *Salmonella* serotypes can be divided into two main groups—typhoidal and non-typhoidal (CDC, 2005).

Non-typhoidal serotypes are more common, and usually cause self-limiting gastrointestinal disease. They can infect a range of animals, and are zoonotic, meaning they can be transferred between humans and other animals (Cooke, and Wain, 2005). Typhoid fever caused by *Salmonella* serotypes are strictly adapted to humans or higher primates—these include *Salmonella* Typhi, Paratyphi A, Paratyphi B, and Paratyphi C (D’Aoust, 1989). In the systemic form of the disease, *Salmonellae* pass through the lymphatic system of the intestine into the blood of the patients (typhoid form) and are carried to various organs (liver, spleen, kidneys) to form secondary foci (septic form). Endotoxins first act on the vascular and nervous apparatus, resulting in increased permeability and decreased tone of the vessels, upset of thermal regulation, and vomiting and diarrhoea (Hudault *et al.*, 2001). In severe forms of the disease, enough liquid and electrolytes are lost to upset the water-salt metabolism, decrease the circulating blood volume and arterial pressure, and cause hypovolemic shock. Septic shock may also develop. Shock of mixed character (with signs of both hypovolemic and septic shock) is more common in severe Salmonellosis. Oliguria and azotemia may develop in severe cases as a result of renal involvement due to hypoxia and toxemia.

Mechanisms of infection differ between typhoidal and nontyphoidal serotypes, owing to their different targets in the body and the different symptoms that they cause. Both groups must enter by crossing the barrier created by the intestinal cell wall, but once they have passed this barrier, they use different strategies to cause infection. Nontyphoidal serotypes preferentially enter M cells on the intestinal wall by bacterial-mediated endocytosis, a process associated with intestinal inflammation and diarrhoea. They are also able to disrupt tight junctions between the cells of the intestinal wall, impairing the cells’ ability to stop the flow of ions, water, and immune cells into and out of the intestine. The combination of the inflammation caused by bacterial-medi-

ated endocytosis and the disruption of tight junctions is thought to contribute significantly to the induction of diarrhoea (Murray, 1991).

Salmonellae are also able to breach the intestinal barrier via phagocytosis and trafficking by CD18-positive immune cells, which may be a mechanism key to typhoidal *Salmonella* infection. This is thought to be a more stealthy way of passing the intestinal barrier, and may, therefore, contribute to the fact that lower numbers of typhoidal *Salmonella* are required for infection than nontyphoidal *Salmonella* (Olsen *et al.*, 2001). Typhoidal serotypes can use this to achieve dissemination throughout the body via the mononuclear phagocyte system, a network of connective tissue that contains immune cells, and surrounds tissue associated with the immune system throughout the body (Parras *et al.*, 1984).

Salmonellosis is also known to be able to cause back pain or spondylosis. It can manifest as five clinical patterns: gastrointestinal tract infection, enteric fever, bacteremia, local infection, and the chronic reservoir state. The initial symptoms are nonspecific fever, weakness, and myalgia among others. In the bacteremia state, it can spread to any parts of the body and this induces localized infection or it forms abscesses (Popoff, 2001). The forms of localized *Salmonella* infections are arthritis, urinary tract infection, infection of the central nervous system, bone infection, soft tissue infection, etc. Infection may remain as the latent form for a long time, and when the function of reticular endothelial cells is deteriorated, it may become activated and consequently, it may secondarily induce spreading infection in the bone several months or several years after acute salmonellosis (Silverman, 1979).

## MATERIALS AND METHODS

By plate count method 1 ml of the sample was prepared and transferred to 9 ml of saline and was maintained as master dilution. From this ( $10^{-1}$  to  $10^{-6}$ ) dilutions were prepared and 1 ml of sample was poured to cool sterilized agar count plate and incubated at 37°C for 24 hours. Colony was counted by colony counter. Morphological study was achieved by microscopic observation of Grams staining, Motility test, Catalase test and Oxidase test. A small portion of suspected colony was streaked on medias such as Nutrient Agar, MacConkey Agar and Eosin Methylene Blue Agar. Biochemical tests were performed using Standard Protocol. Following this serological typing was done. Depression plates were taken and were marked as A, B and C. In A depression plate it was marked as negative control in which phenolized saline suspension was added. In B depression

Table 1. Biochemical Test for Salmonella paratyphi A

S. No.	Biochemical Tests	Results
1.	Catalase	Positive
2.	Oxidase	Negative
3.	TSI Test Butt Slant Gas H <sub>2</sub> S	Acid Acid Negative Negative
4.	Indole	Negative
5.	Methyl Red	Positive
7.	Voges Proskauer	Positive
8.	Citrate	Positive

plate it was marked as test in which phenolized saline suspension and antiserum of respective organism was added and in C depression plate it was marked as posi-

tive control which contain phenolized saline suspension of known organism and antiserum.

## RESULTS AND DISCUSSION

The total number of positive and negative samples obtained from sewage and drinking water for *Salmonella paratyphi A* was found to be 13. In identification of bacterial isolate of morphological characteristics by Grams staining and motility for *Salmonella paratyphi A*, it was found to be Gram negative small rods and motile. Cultural characteristics of *Salmonella paratyphi A* on Nutrient Agar formed large transparent colonies, on MacConkey Agar lactose fermenting colonies and on Blood Agar moist colonies. Biochemical Test, Antibiotic Sensitivity Test and Serotype study results indicate the prevalence of *Salmonella paratyphi A* in the sewage and drinking water samples collected for the present study (Tables 1 – 4 and Figures 1 – 8).

Table 2. Antibiotic Sensitivity Test for Klebsiella pneumoniae

S. No	Name of the Antibiotics	Zone of inhibition in mm	Interpretation
1.	Amikacin ( AI )	13 mm	Resistant
2.	Chloramphenicol ( C )	21 mm	Sensitive
3.	Co - trimoxazole ( CT )	13 mm	Resistant
4.	Tetracycline ( T )	20 mm	Sensitive
5.	Gentamycin ( G )	14 mm	Intermediate
6.	Ceftriaxone ( CTR )	22 mm	Sensitive
7.	Cephotaxime ( CTX )	No zone	Resistant
8.	Norfloxacin ( NX )	18 mm	Sensitive
9.	Meropenem ( MR )	No zone	Resistant
10.	Imipenem ( I )	No zone	Resistant

Zone of inhibition  
Below 10 mm - least active  
Between 11-25 mm - active  
Above 26 mm - very active

Table 3. Serotyping of Salmonella paratyphi A from Sewage Sample

S. No.	Name of the Isolate	Antiserum			
		O Antigen			H Antigen
		1	2	12	Phase 1 - a
1.	<i>S. paratyphi A - 1</i>	-	+	-	-
2.	<i>S. paratyphi A - 2</i>	-	-	+	-
3.	<i>S. paratyphi A - 3</i>	-	+	-	-
4.	<i>S. paratyphi A - 4</i>	-	-	-	+
5.	<i>S. paratyphi A - 5</i>	+	-	-	-
6.	<i>S. paratyphi A - 6</i>	-	-	+	-
7.	<i>S. paratyphi A - 7</i>	-	-	-	+
8.	<i>S. paratyphi A - 8</i>	-	-	-	+

S. No.	Name of the Isolate	Antiserum			
		O Antigen			H Antigen
		1	2	12	Phase 1 - a
1.	<i>S. paratyphi</i> A - 1	-	+	-	-
2.	<i>S. paratyphi</i> A - 2	+	-	-	-
3.	<i>S. paratyphi</i> A - 3	-	-	-	+
4.	<i>S. paratyphi</i> A - 4	-	-	+	-
5.	<i>S. paratyphi</i> A - 5	-	-	-	+

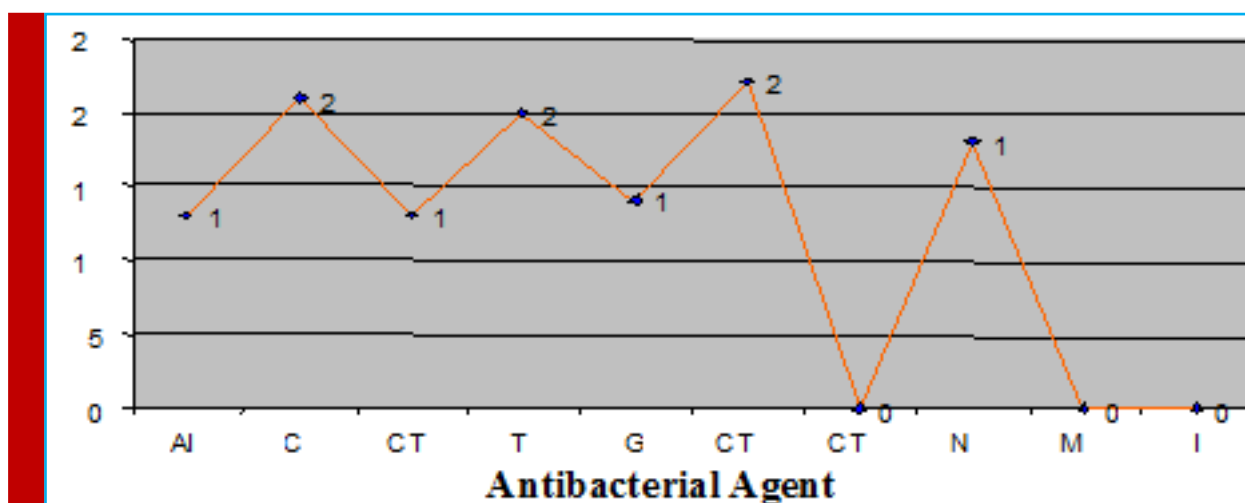


FIGURE 1. Antibacterial Activity of *Salmonella paratyphi* A. AI - Amikacin, C - Chloramphenicol, CT - Co-trimoxazole, T - Tetracycline, G - Gentamycin, CTR - Ceftriaxome, NX - Norfloxacin, MR - Meropenem, I - Imipenem

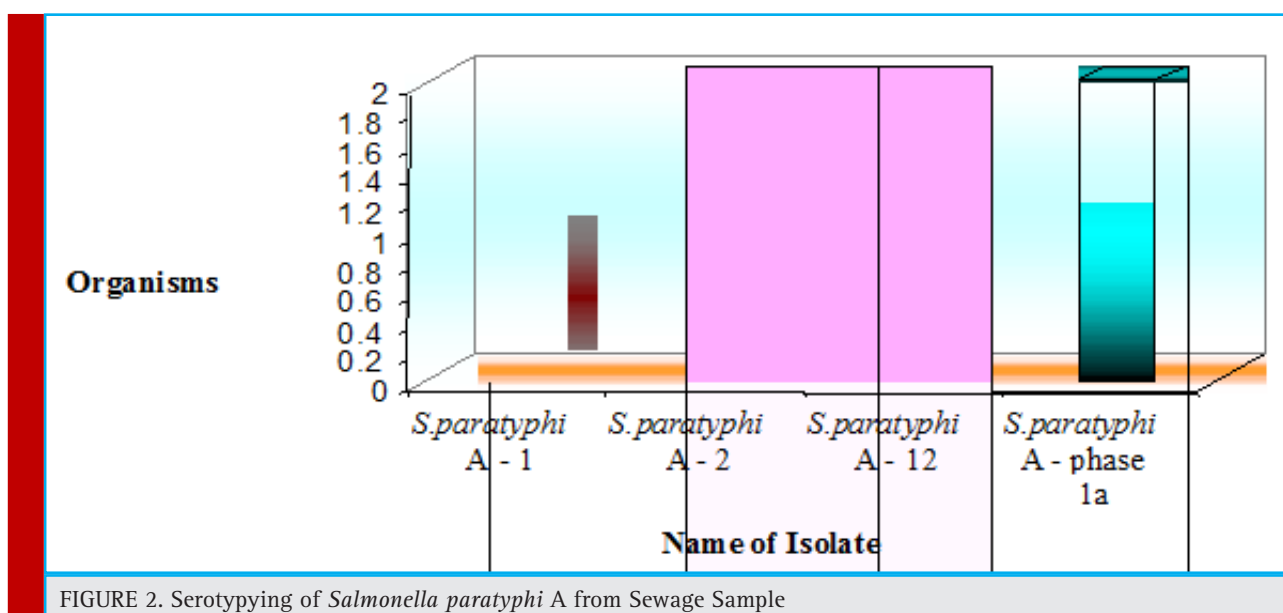
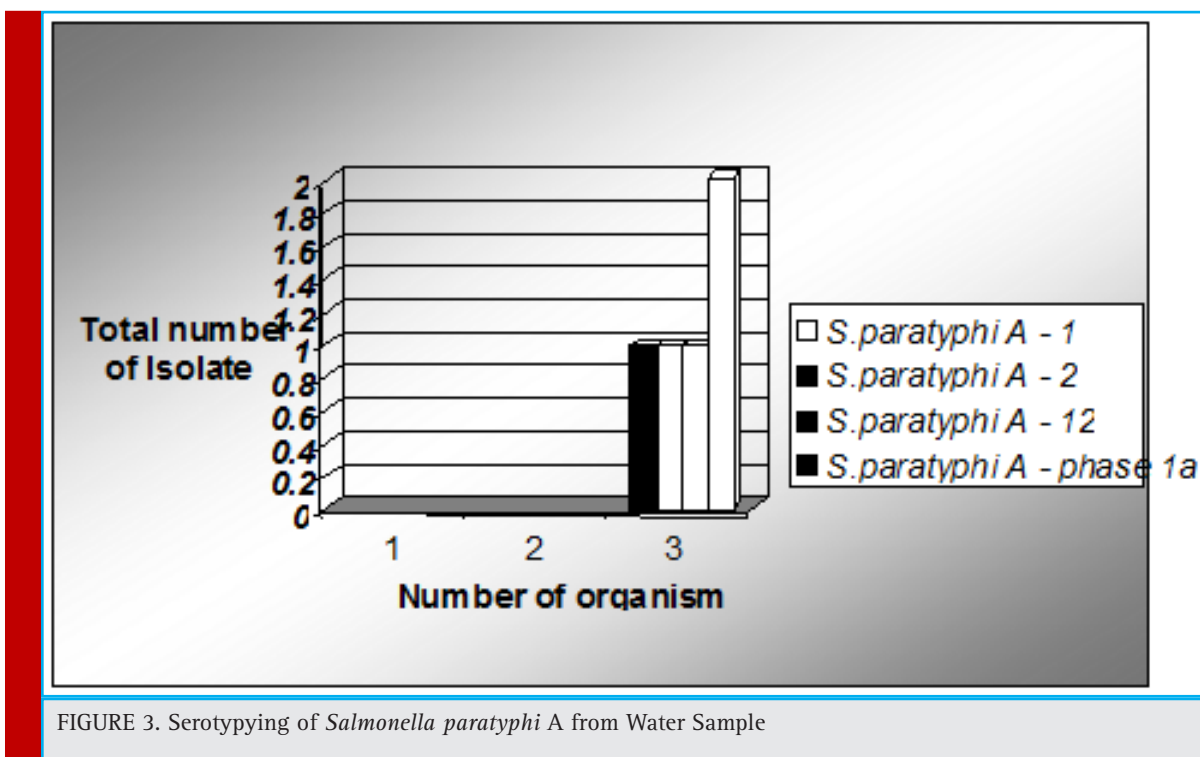
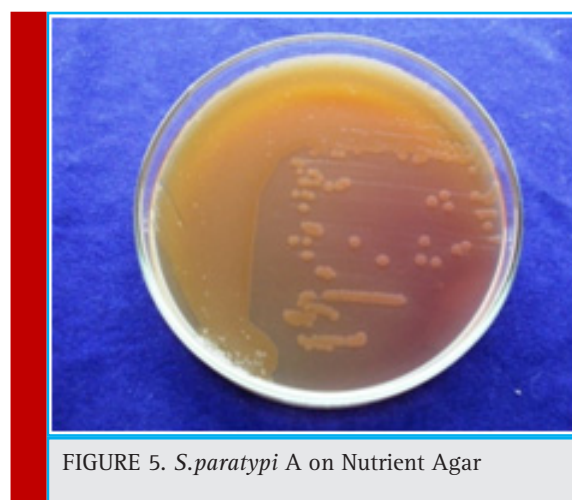


FIGURE 2. Serotyping of *Salmonella paratyphi* A from Sewage Sample



Salmonella infection (salmonellosis) is a common bacterial disease that affects the intestinal tract. Salmonella bacteria typically live in animal and human intestines and are shed through feces. Humans become infected most frequently through contaminated water or food. Typically, people with salmonella infection have no symptoms. Others develop diarrhea, fever and abdominal cramps within eight to 72 hours. Most healthy people recover within a few days without specific treatment. In some cases, the diarrhea associated with salmonella

infection can be so dehydrating as to require prompt medical attention. Life-threatening complications also may develop if the infection spreads beyond your intestines. The risk of acquiring salmonella infection is higher if one travels to countries with poor sanitation. Thus the present study was aimed at studying this Enterobacteriaceae pathogen which revealed high prevalence pattern in the water samples collected from polluted environments.



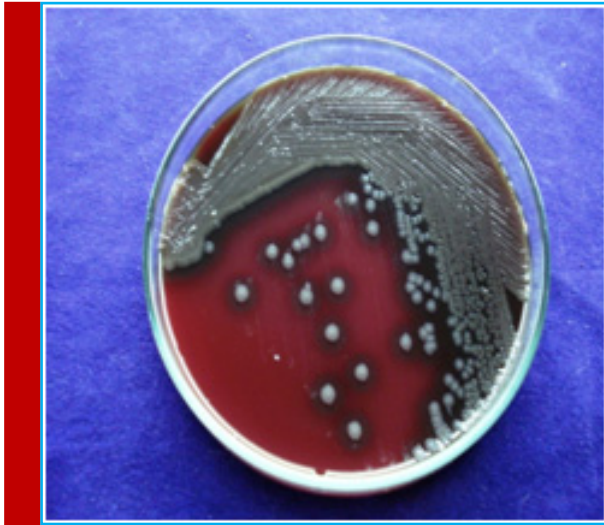


FIGURE 6. *S. paratyphi* A on Blood Agar



FIGURE 7. IMViC test for *S. paratyphi* A. A = Indole B = Methyl Red C = Voges Proskaur. D = Citrate E = TSI

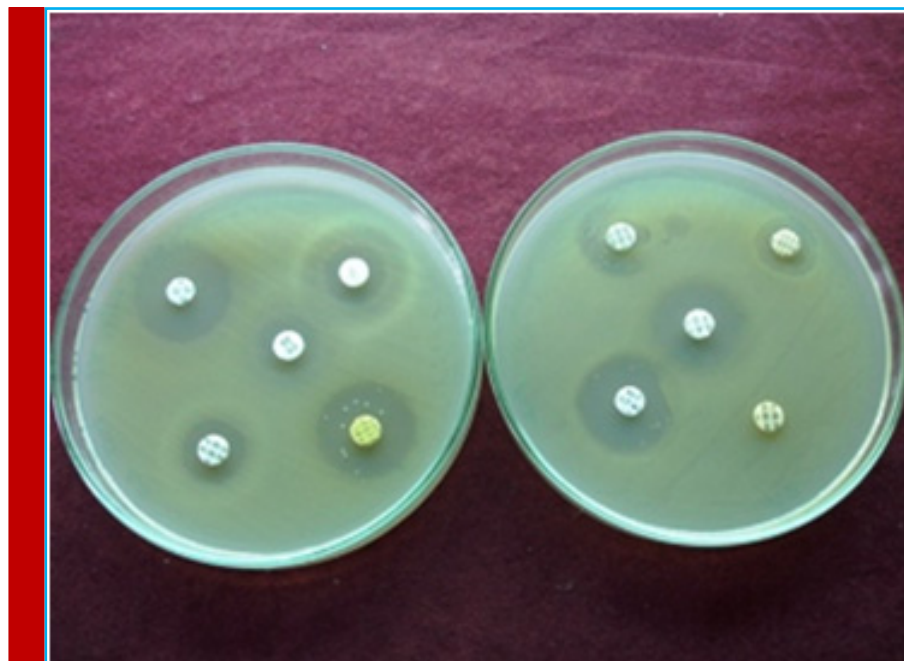


FIGURE 8. Antibiotic sensitivity test for *Salmonella paratyphi* A

## REFERENCES

Cabadaj, R., Pipova, M. and Turek, P. (1975). Poultry, eggs, and their products as sources of human *Salmonellosis* in Slovakia. In Proceedings of the World Veterinary Congress. Japan, p. 168.

CDC. (2005). *Salmonella* Surveillance Annual Summary US Department of Health and Human Services, Centers for Disease Control and Prevention, Atlanta, Georgia.

Cooke, F. and Wain, J. (2005). Antibiotic resistance in *Salmonella* infections, in Maskell D, Mastroeni P (Eds), *Salmonella*

Infections. Clinical, immunological and molecular aspects. Cambridge University Press, Cambridge, pp. 25-56.

D'Aoust, J.Y. (1989). *Salmonella* in Foodborne Bacterial Pathogenesis. Doyle, M.P. pp. 327-445. New York, Marcel Dekker.

Hudault, S., Guignot, J. and Servin, A.L. (2001). *Escherichia coli* strains colonizing the gastrointestinal tract protect germfree mice against *Salmonella typhimurium* infection. Gut 49:47-55.

Murray, C.J. (1991). *Salmonellae* in the environment. Revue Scientifique et Technique. Office International des Epizooties 10, 765-785.

Olsen, S.J., Bishop, R., Brenner, F.W., Roels, T.H., Bean, N. and Tauxe, R.V. (2001). The changing epidemiology of *Salmonella* trends in serotypes isolated from humans in the United States, 1987–1997. *J. Infectious Disease*; 183, 753-761.

Parras Jimenez, L., Espigares Garcia, M. and Rodriguez-Contreras, R. (1984). Resistencia de origen plasmidico a los b-lactamicos en el genero *Salmonella*. *Laboratorio* 78, 31-41.

Popoff, M.Y. (2001). *Antigenic Formulas of the Salmonella Serovars*, 8th ed. W.H.O. Collaborating Centre for Reference and Research on *Salmonella*, Institute Pasteur, Paris, France.

10. Silverman, M. (1979). Phase variation in *Salmonella* genetic analysis of a recombinational switch. *Proc. National Academy Science USA* 76, 391-395.